

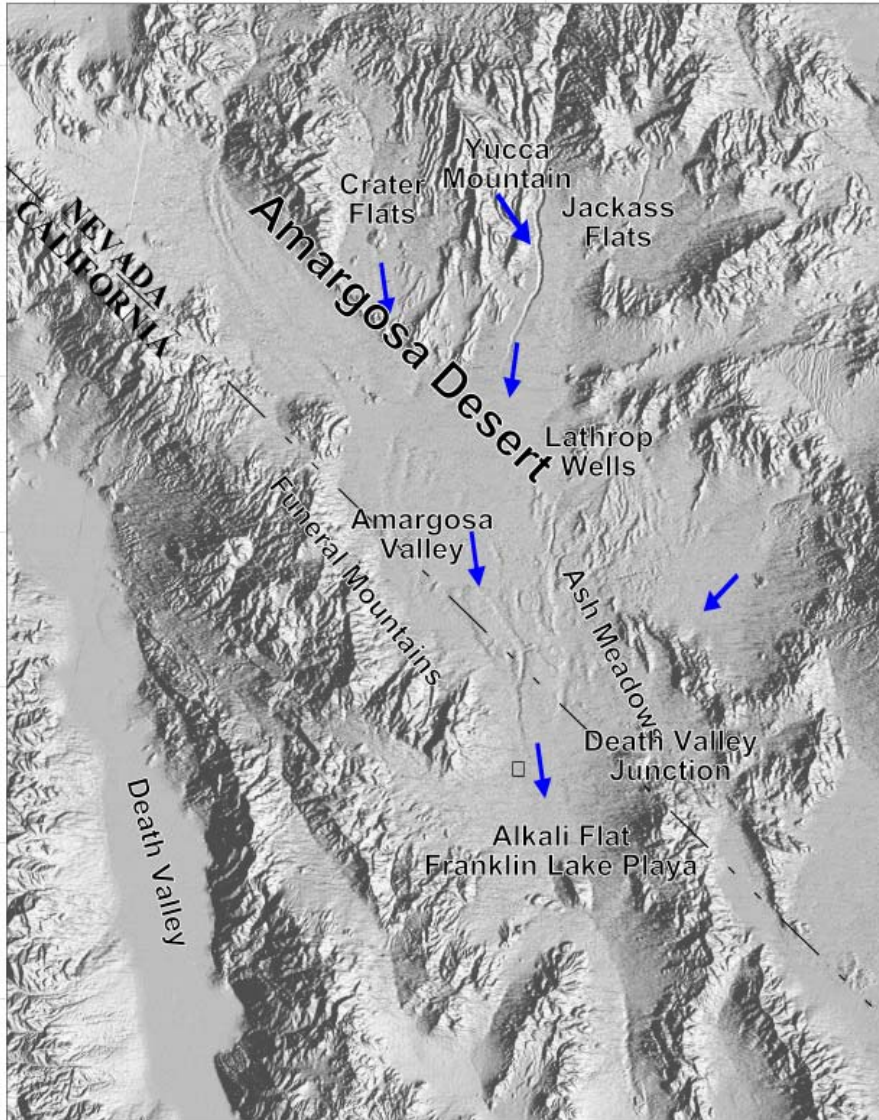


Q: *Can radioactive waste from the repository contaminate the groundwater in Las Vegas?*

A: Yucca Mountain is located in the Death Valley hydrologic basin, the boundaries of which are defined and understood. Water in this basin does not flow into any rivers or oceans and is isolated from the aquifer systems of Las Vegas and Pahrump (the largest community in Nye County).

Isolated hydrologic basins are a relatively rare geologic feature. The groundwater systems in this region correlate well to the mountainous topography and have been stable for millions of years.

No. It is geologically impossible for the groundwater from Yucca Mountain to reach Las Vegas. The groundwater system below Yucca Mountain is not connected to the groundwater system serving Las Vegas. These groundwater basins have been separated for millions of years.



Yucca Mountain
is approximately
90 miles from
Las Vegas



Yucca Mountain is located in a closed hydrologic basin. The groundwater system in this basin conforms to the mountainous topography, and drains inward. Water in this basin does not flow into any rivers or oceans, and is isolated from the aquifer systems of Las Vegas and Pahrump, the largest community in Nye County.